

KOBELCO

Performance  Design

Hydraulic Excavator **-11 SERIES**

SK260D LC

■ Engine Power:

194 hp {145 kW} @ 2,200 rpm
(SAE NET)

■ Operating Weight:

74,300 lb {33,700 kg}

Maximum reach (arm top)
42'10" {13,060mm}

Maximum height (arm top)
48'4" {14,730mm}

Maximum depth (arm top)
16'5" {5,010mm}

Overall width of crawler
10'6" {3,190mm}

Expand your work area with the new KOBELCO scrap loader

The new boom and arm expand your work area, improve efficiency in gathering operations, and support transport loadability efficiently.



Large easy-to-see 10-inch color monitor

Important information is easy to read, and operations can be performed from a simple menu screen. The camera can also be easily checked from the large screen, contributing to safe operation.

Advanced LED backlight

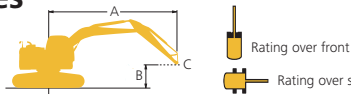
Switches and dials utilize LED backlighting to increase visibility at night and improves the ambiance of the interior.

Specifications

Model		SK260DLC-11
Arm length	ft-in {mm}	19'4" {5,900}
Boom length	ft-in {mm}	24'7" {7,500}
Max. operation height (arm top)	ft-in {mm}	48'4" {14,730}
Operating weight	lb {kg}	74,300 {33,700}
Swing speed	rpm {min ⁻¹ }	7.4 {7.4}
Travel speed (high/low)	mph {km/h}	3.6 / 2.2 {5.8 / 3.6}
Fuel tank	U.S.gal {L}	106.5 {403}
DEF tank	U.S.gal {L}	21.9 {83}

Model			SK260DLC-11
Hydraulic System	Boom, arm and bucket	psi {MPa}	4,970 {34.3}
	Power boost	psi {MPa}	5,480 {37.8}
Engine	Model		YANMAR 4TN107FTT
	Rated power output (SAE NET)	hp/rpm {kW/min ⁻¹ }	194 / 2,200 {145 / 2,200}
	Rated power output (Without fan)	hp/rpm {kW/min ⁻¹ }	208 / 2,200 {155 / 2,200}
Cab	Type		Link-Elevating Cab
	Elevation stroke	ft-in {mm}	8'7" {2,610}
	Max. eye point height	ft-in {mm}	17'8" {5,380}

Lift Capacities

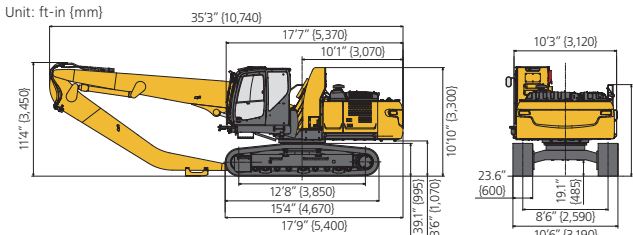


A - Reach from swing centerline to arm top
 B - Arm top height above/below ground
 C - Lift point
 Relief valve setting: 4,970 psi (34.3 MPa)
 Relief valve setting (Heavy Lift): 5,480 psi (37.8 MPa)

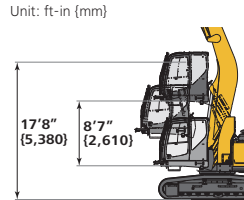
SK260DLC		Boom: 24'7" (7.50 m)		Arm: 19'4" (5.90 m)		Without bucket:		Counterweight: 20,700 lb (9,400 kg)		Shoe: 23.6" (600 mm) (Heavy Lift)		At max. reach		
A	B	10' (3.0 m)	15' (4.6 m)	20' (6.1 m)	25' (7.6 m)	30' (9.1 m)	35' (10.7 m)	40' (12.2 m)			Radius			
45' (13.7 m)	lb		*17,000	*17,000								*12,280	*12,280	19'9" (6.03 m)
40' (12.2 m)	lb			*17,500	*17,500	*12,530	*12,530					*9,990	*9,990	27'2" (8.30 m)
35' (10.7 m)	lb			*18,600	*18,600	*16,650	*16,650	*12,220	*12,220			*8,930	*8,930	32'3" (9.84 m)
30' (9.1 m)	lb			*18,320	*18,320	*16,380	*16,380	*14,860	13,020	*9,930	9,880	*8,340	*8,340	35'11" (10.97 m)
25' (7.6 m)	lb			*18,740	*18,740	*16,590	*16,590	*14,890	12,930	*13,460	9,940	*8,020	*8,020	38'8" (11.80 m)
20' (6.1 m)	lb			*19,840	*19,840	*17,200	16,910	*15,180	12,650	*13,520	9,810	*9,490	7,740	40'8" (12.40 m)
15' (4.6 m)	lb		*26,780	*26,780	*21,520	*21,520	*18,080	16,220	*15,610	12,240	*13,660	9,570	11,110	41'11" (12.80 m)
10' (3.0 m)	lb	*45,940	*45,940	*30,690	*30,690	*23,370	21,370	*19,010	15,390	*16,030	11,740	13,440	9,280	42'8" (13.01 m)
5' (1.5 m)	lb	*10,650	*10,650	*33,520	29,930	*24,750	19,890	*19,650	14,550	*16,240	11,230	13,110	8,970	42'9" (13.05 m)
G.L.	lb	*8,290	*8,290	*24,310	*24,310	*24,980	18,710	*19,670	13,840	15,950	10,790	12,830	8,700	42'4" (12.92 m)
-5' (-1.5 m)	lb	*9,860	*9,860	*19,730	*19,730	*23,750	17,980	*18,780	13,350	*15,180	10,470	*12,250	8,510	41'4" (12.61 m)
-10' (-3.0 m)	lb		*19,900	*19,900	*21,000	17,650	*16,810	13,090	*13,460	10,300	*10,420	8,430		39'8" (12.11 m)
-15' (-4.6 m)	lb			*16,700	*16,700	*13,550	13,070	*10,560	10,310					37'4" (11.39 m)

- Notes:
- Do not attempt to lift or hold any load that is greater than these lift capacities at their specified lift point radius and heights. Weight of all accessories must be deducted from the above lift capacities.
 - Lift capacities are based on machine standing on level, firm, and uniform ground. User must make allowance for job conditions such as soft or uneven ground, out of level conditions, side loads, sudden stopping of loads, hazardous conditions, experience of personnel, etc.
 - Bucket pin attachment point defined as lift point.
 - The above lift capacities are in compliance with ISO 10567. They do not exceed 87% of hydraulic lift capacity or 75% of tipping load. Lift capacities marked with an asterisk (*) are limited by hydraulic capacity rather than tipping load.
 - Operator should be fully acquainted with the Operator's and Maintenance Instructions before operating this machine. Rules for safe operation of equipment should be adhered to at all times.
 - Lift capacities apply to only machine as originally manufactured and normally equipped by KOBELCO CONSTRUCTION MACHINERY CO., LTD.

Dimensions



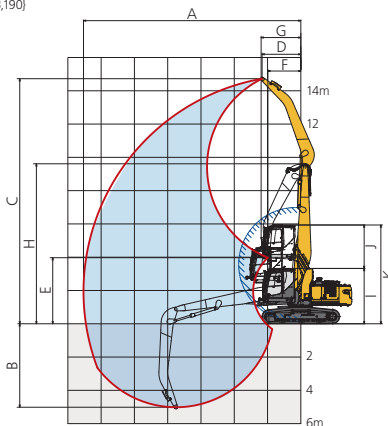
Elevation stroke



Working Ranges

Range	SK260DLC
A-Max. operation reach (arm top)	42'10" (13,060)
B-Max. operation depth (arm top)	16'5" (5,010)
C-Max. operation height (arm top)	48'4" (14,730)
D-Radius of attachment at max. operation height (arm top)	7'8" (2,330)
E-Max. dumping height at arm in position (arm top)	13'0" (3,970)
F-Radius of attachment at arm in position (arm top)	6'6" (1,980)
G-Min. front swing radius	7'10" (2,390)
H-Height at min. front swing radius	31'6" (9,610)
I-min. height	10'11" (3,320)
J-Elevation stroke	8'7" (2,610)
K-max. height	19'6" (5,930)

*Without including height of shoe lug.



Standard and Optional Equipment

Category	Description	●=Std ○=Opt	
Engine	YANMAR 4TN107FTT (Tier IV Final certified)	●	
	Auto engine acceleration/deceleration	●	
	Auto Idle Stop	●	
	3 work modes H, S, Eco	●	
	Power boost	●	
	Heavy lift mode	●	
	Independent travel	●	
	Swing priority	●	
	Rotation, extra piping pressure drain	●	
	Hydraulic system	Single pedal travel	○
Boom to arm regeneration		●	
Auto warm-up system		●	
Rotation hydraulics with proportional hand control		○	
Hydraulic oil VG46		●	
Hydraulic oil VG46 (BIO)		○	
Hydraulic oil VG32		○	
Hydraulic oil VG32 (BIO)		○	
Piping		Rotation & fork grapple piping	●
		Link type Elevator cab	●
Cabin	Air suspension seat with heat	●	
	10-inch color monitor	●	
	LED door light	●	
	Automatic climate control	●	
Lights	Radio (AM/FM, AUX, USB, Bluetooth® and hands-free telephone)	●	
	12V power outlet	●	
Working equipment	10 LED work lights: 2 on boom, 2 on arm, 2 on cab front, 1 on cab under, 2 on rear counterweight, 1 on front right	●	
	Scrap loader boom 24'7" (7.50 m)	●	
Counterweight	Standard straight arm 19'4" (5.90 m)	●	
	Heavier CAV 20,700 lb (9,400 kg) with swing flasher	●	
Under-carriage	23.6" (600 mm) flat shoes	●	
	23.6" (600 mm) triple grouser shoes	○	
	27.6" (700 mm) triple grouser shoes	○	
	31.5" (800 mm) triple grouser shoes	○	
	35.4" (900 mm) triple grouser shoes	○	
	Reinforced additional track guide	●	
	LC lower frame	●	
	Reinforced motor cover propel	●	
	Elevator lower step	●	
	Lower swivel guard	●	
Safety	Tilt opening top cab guard (Top guard level II ISO 10262:1998)	●	
	Bar-type front guard (Front guard level II ISO 10262:1998)	●	
	Mesh-type front guard (Front guard level II ISO 10262:1998)	○	
	Engine emergency stop switch	●	
	3-inch retractable seat belt	●	
	Seatbelt indicator on display	●	
	Travel alarm	●	
	Cab emergency lowering device	●	
	Cab lift alarm	●	
	Swing flashers in counterweight	●	
Others	Cab room mirror	●	
	Cab under view mirror	●	
	Left rear and right side mirrors	●	
	3-side 270-degree camera system	●	
	Hose burst valve for boom and arm cylinder	○	
	Angled upper deck guards	●	
	Quick coupler piping ready brackets	●	
	ISO to BHL pattern changer	●	
	Single pedal travel	○	
	Battery disconnect switch	●	
Cylinder guard (main boom foot)	●		
KOMEXS Machine Monitoring	●		
3 Year or 3,000 Hour Warranty	●		

Note: Bluetooth® is a registered trademark of the Bluetooth SIG Inc.

Note: This catalog may contain attachments and optional equipment that are not available in your area. And it may contain photographs of machines with specifications that differ from those of machines sold in your areas. Please consult your nearest KOBELCO distributor for those items you require. Due to our policy of continuous product improvements all designs and specifications are subject to change without advance notice.

Copyright by KOBELCO CONSTRUCTION MACHINERY CO., LTD. No part of this catalog may be reproduced in any manner without notice.

KOBELCO CONSTRUCTION MACHINERY U.S.A. INC.

22350 Merchants Way, Katy, TX 77449
 Tel: 281-888-8430 Fax: 281-506-8713
 www.KOBELCO-USA.com

KOBELCO is the corporate mark used by Kobe Steel on a variety of products and in the names of a number of Kobe Steel Group companies.

Inquiries To: